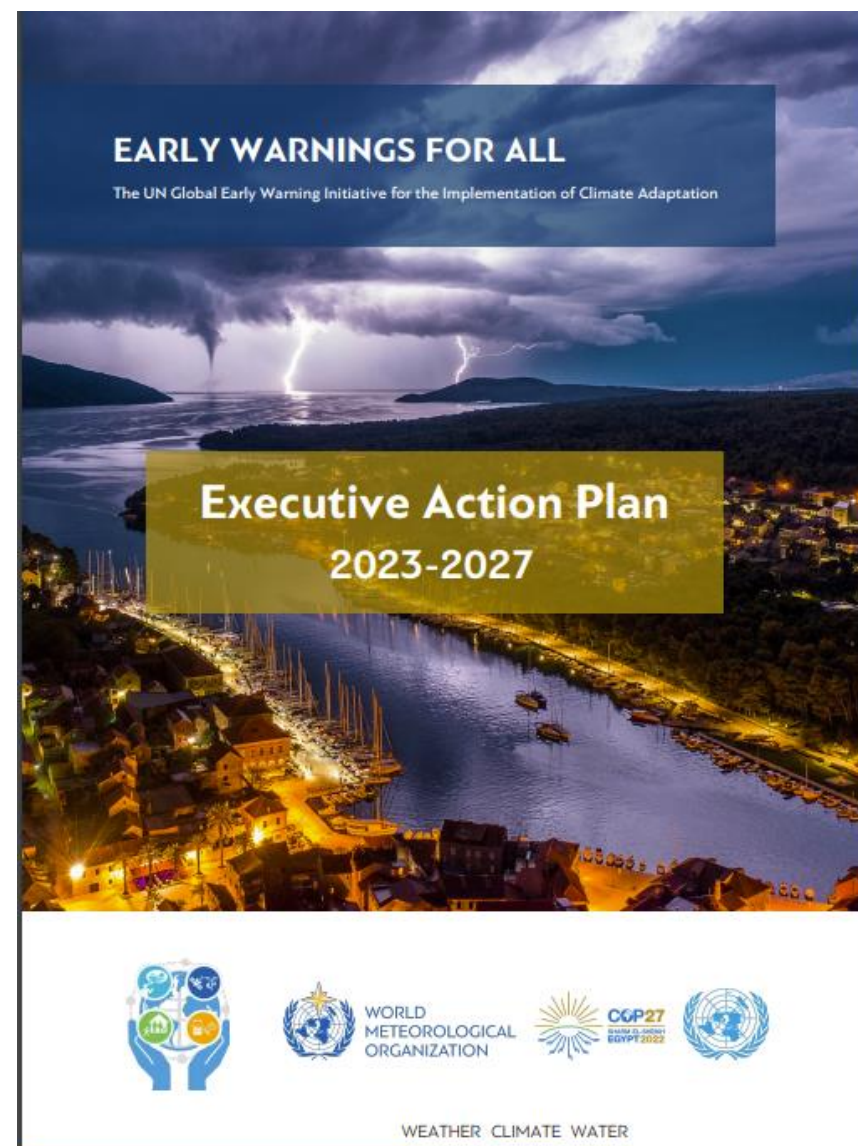





Early Warnings and conflicts

www.cimafoundation.org



EARLY WARNINGS FOR ALL
The UN Global Early Warning Initiative for the Implementation of Climate Adaptation

Executive Action Plan
2023-2027



WEATHER CLIMATE WATER

Components for EWS

Disaster Risk Knowledge

Detection, monitoring,
analysis and forecasting
hazards and
consequences

Warning dissemination
and communication

Preparedness and
Response Capabilities

**Impact
Based Early
Warnings**

**Early
Actions**



TIME PERIOD: 01/04/2023 - 28/04/2023 | EVENTS: 3,828 ↓7.7% N/A | FATALITIES: 2,753 ↓12.7% N/A

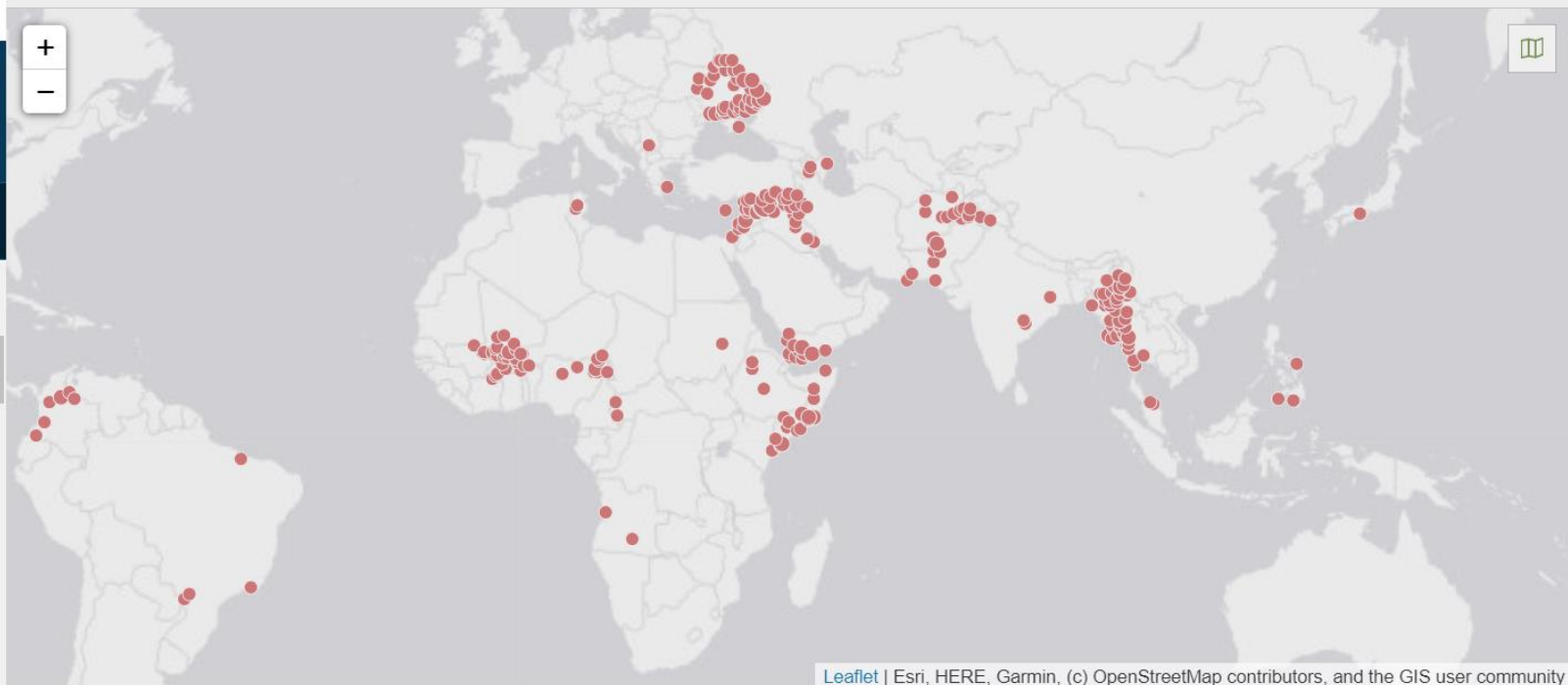


Map Filters

Use the filters to adjust the data

Country view Point view

🔍 FILTERS LIST



- SELECT ALL | SELECT NONE
- Battles (0/3) ^
 - Armed clash
 - Government regains territory
 - Non-state actor overtakes territory
 - Violence against civilians (0/3) v
 - Explosions/Remote violence (6/6) ^
 - Air/drone strike

[RESET ALL FILTERS](#) [APPLY FILTERS](#)



🔍

🗺️

+

📄

⚙️



WHO?

- Cima Research Foundation (**CIMA**)
- The Italian Red Cross (**itRD**)
- The Ukrainian Hydrometeorological Center (**UHC**)
- The State Hydrometeorological Service of the Republic of Moldova (**SHS**)
- The European Center for Medium Weather Forecasting (**ECMWF**) in the framework of a cooperation between PPRD EAST 3 and the SEE-MHEWS programme run by the World Meteorological Organization (**WMO**)

This activity has also seen a strong connection with **DG ECHO** and **JRC** throughout the whole process (design, testing and distribution).



WHAT?



Official Meteorological Warnings

for Ukraine issued by the UHC
for Moldova issued by the SHS



Weather forecasts

temperature, wind, wind-chill,
humidex, and precipitation



Information on border crossings and reception centres

Two different reception centres are generally depicted: those hosting refugees for few hours and located within 50 km from the border between Ukraine and Poland and large-scale reception centres (500-2000 people), which provide temporary shelter for people in need.



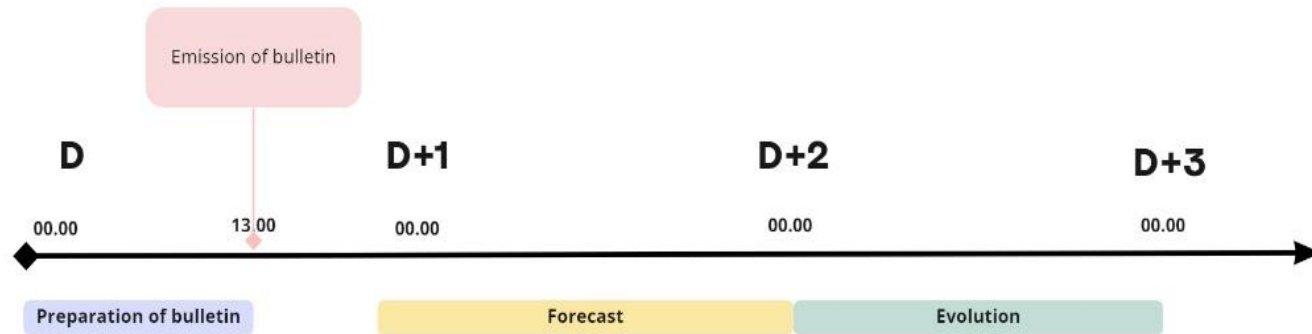
Internal Displaced Persons (IDPs) and Refugees

WHERE?



The Bulletin covers the **Ukrainian and Moldovan States** and a buffer zone around them.

WHEN?



The temporal framework of the bulletin mostly covers

D+1 (forecasts) and **D+2** (evolution).

Forecasts for meteorological and biometric data are provided for the next 24h (00 UTC of D+1 to 00 UTC of D+2), while the meteorological evolution covers the 24h of the D+2 (00 UTC of D+2 to 00 UTC of D+3)



Delivery time

between the 13:00 and 16:00 of D.

HOW?

Aggregation criteria of meteorological data



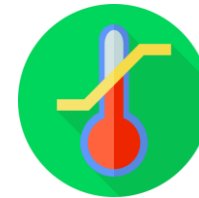
Daily max and min temperature



Daily max value of humidex



Daily maximum wind speed



Daily min value of Wind Chill



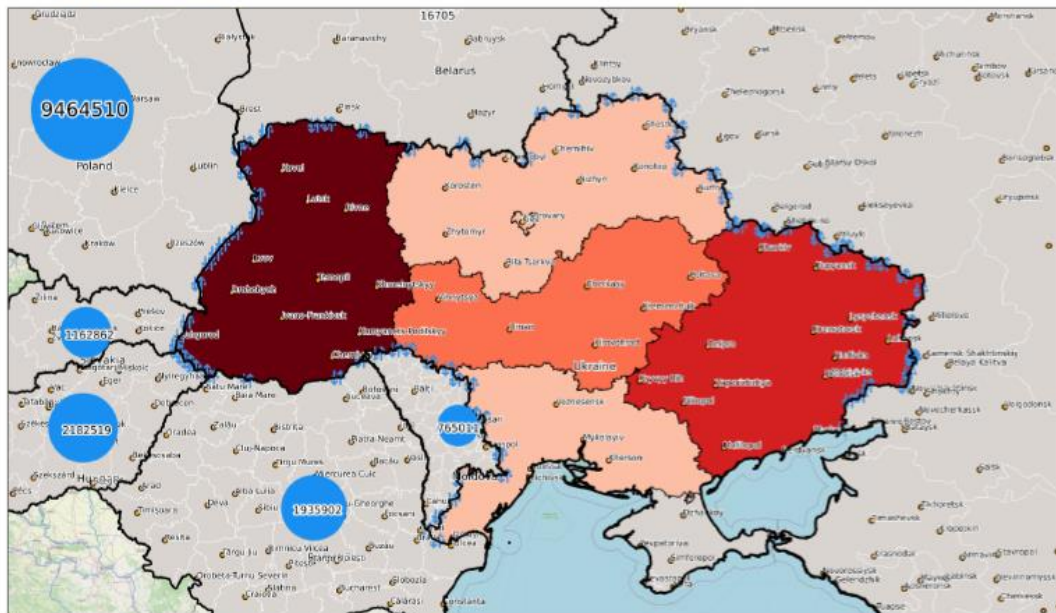
Daily cumulative precipitation



Color code system
to provide different levels of alert

IDPs*, refugees** and international border crossings

*updated monthly **updated weekly
Source: UNHCR



- National borders
- Main cities
- International border crossings

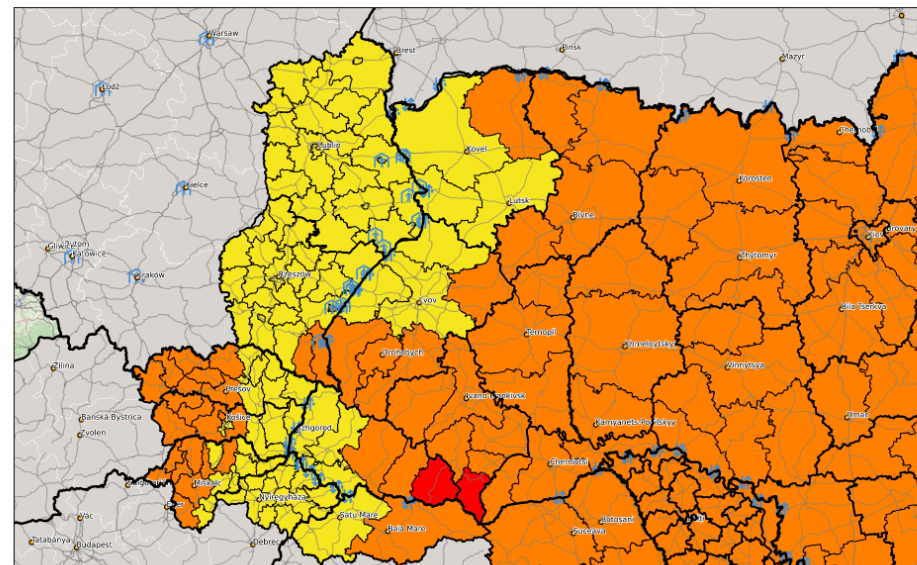
Refugees
1

IDPs	IDPs Number
1	0 < N < 750k
2	750k < N < 1.5M
3	1.5M < N < 3M
4	N > 3M

Cartographic information
Reference System: ETRS-89 EPSG:3035

Automatically generated bulletin
powered by: PPRD East 3 Team
15/02/2023

Focus: min temperature forecast Vs international border crossings and reception centres 16/02/2023



- National and regional border
- Subregional border
- Main cities
- Roads
- International border crossings
- Reception centres

Temp Class	Min Temp [C]
1	T > 5
2	0 < T < 5
3	-5 < T < 0
4	T < -5

Cartographic information
Reference System: ETRS-89 EPSG:3035
Meteo dataset: ICON

Automatically generated bulletin
powered by: PPRD East 3 Team
15/02/2023



thanks



info@cimafoundation.org

www.cimafoundation.org